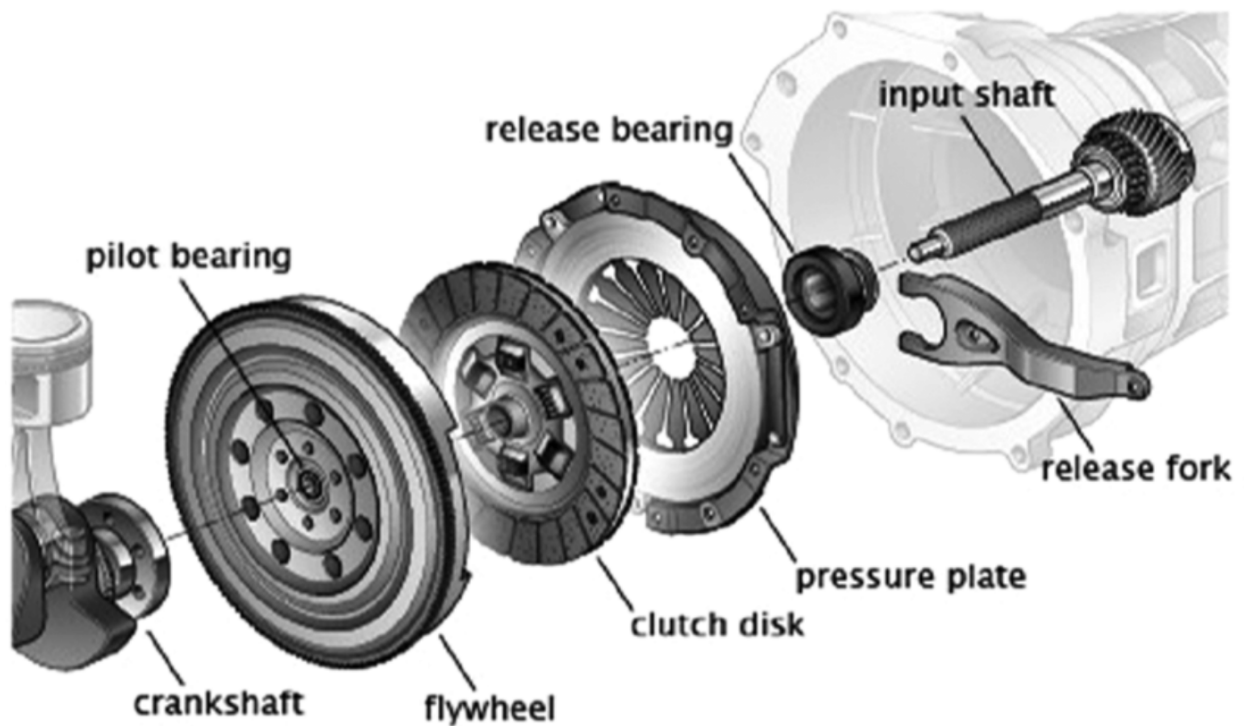




Clutch Division, Eaton VG

## 430mm Clutch Pull & Installation Guide



Key:

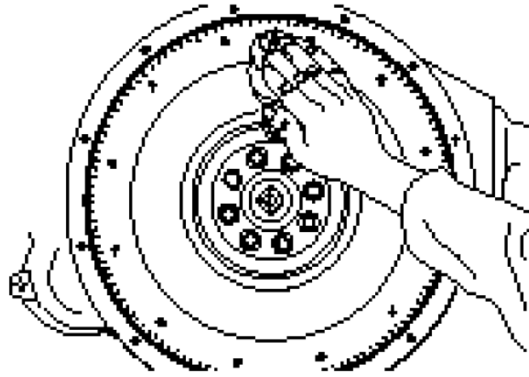
CA = Cover Assembly or Pressure Plate

DDA = Drive disc or Clutch Disc assembly

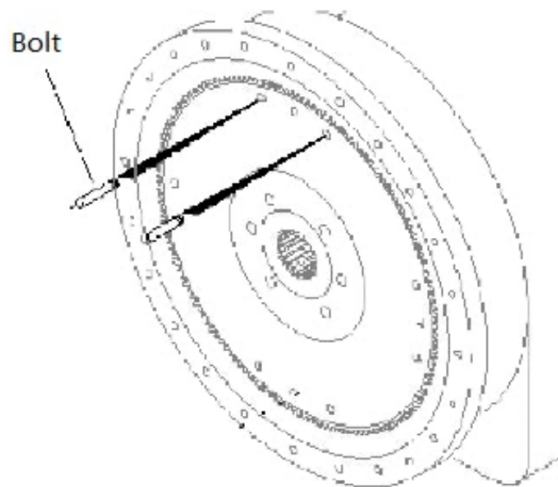
RB = Release Bearing

## Clutch Installation

- a. Clean the facings of the flywheel and clutch plate, remove the anti-rust oil, and any stains.
- b. Check for any damage to the teeth of the flywheel.



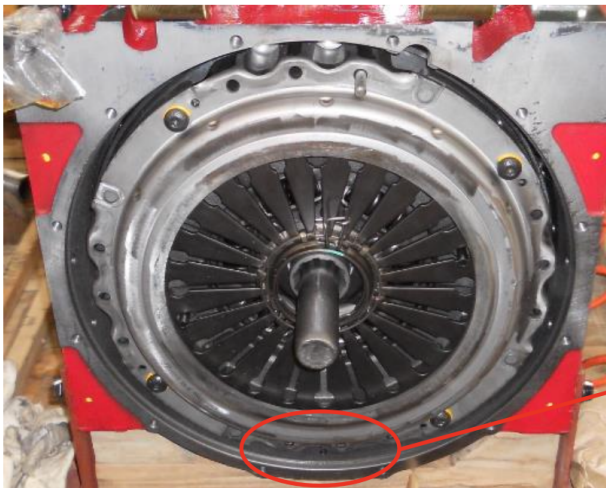
Install the two guide studs at the position of 11 and 1 clock of flywheel.



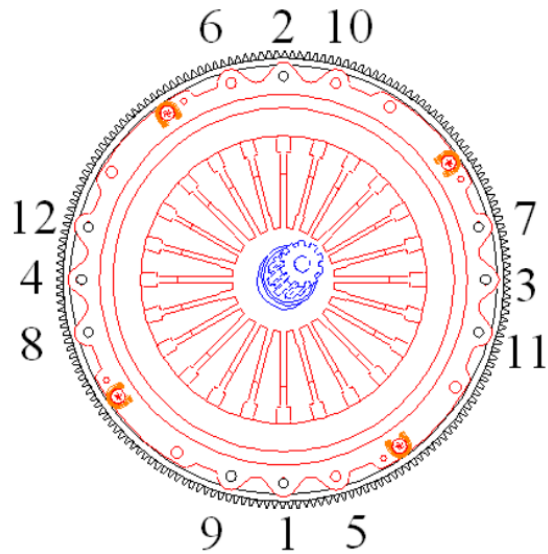
Pass the aligning tool through the DDA spline, ensure the side marked “flywheel side” is toward the flywheel, then align the tool into the pilot bearing.



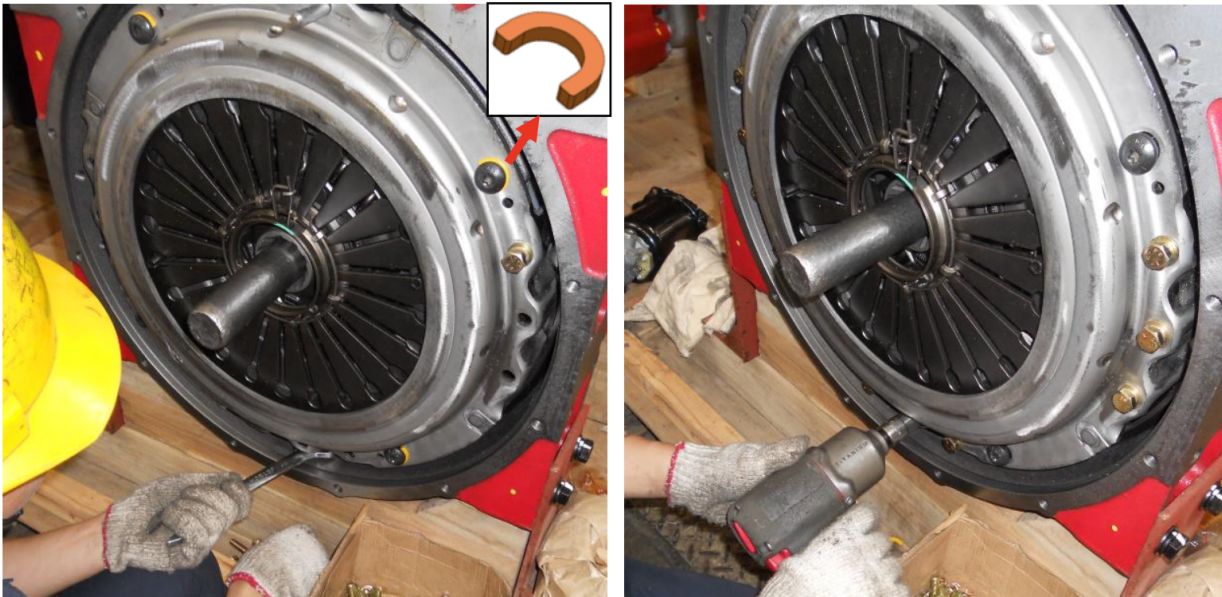
Install CA, push CA toward the flywheel through the guide studs, then inspect if CA aligns with flywheel on the pilot, ensure the CA pilot overlaps with the flywheel at the bottom section



Install the CA bolts loosely, and replace the guide studs sequentially, in the pattern shown below. Torque range is 50~60Nm (37~44 ft-lb)



As you tighten the bolts, the travel safety gaskets will fall off. These gaskets are only there to protect during transportation of the new parts.

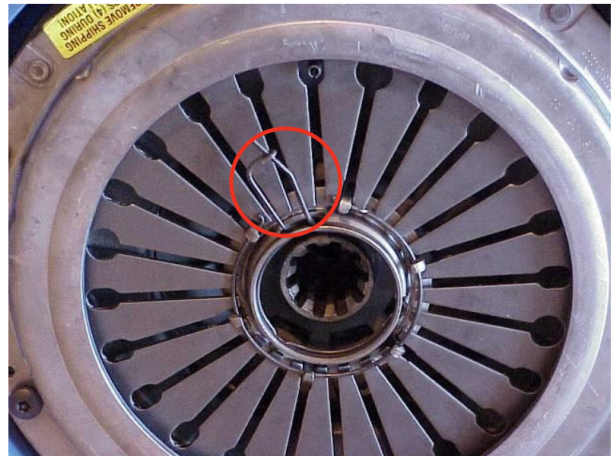
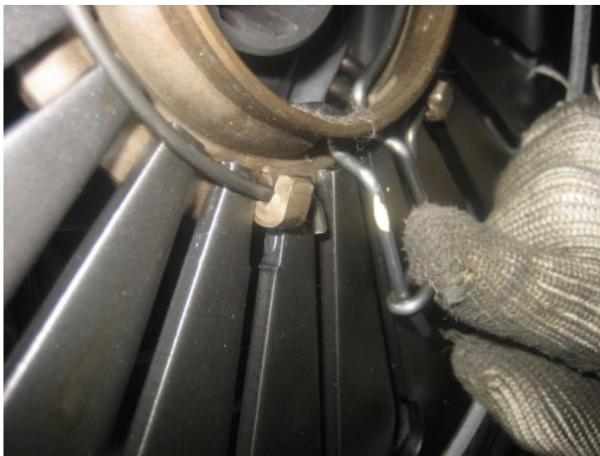




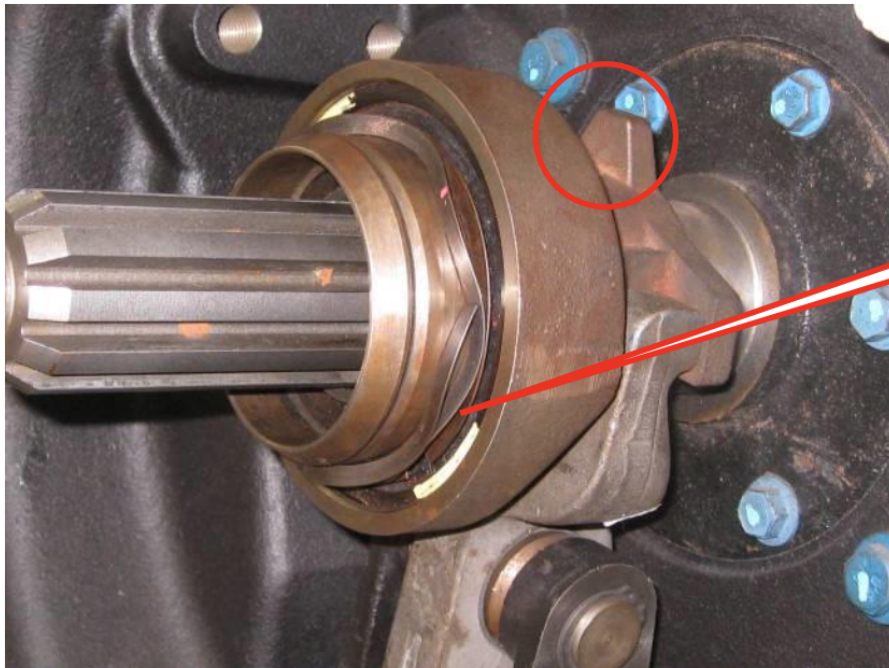
Remove the aligning tool.

Release Bearing Installation

- c. Ensure the quick clip is in the open position.

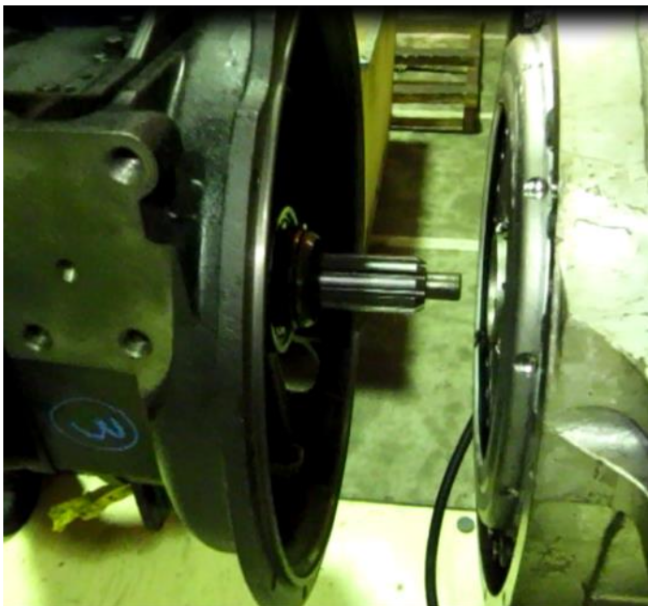


Install the RB into the front of the CA. Inspect the installation position between the RB and release yoke, ensure the middle ear of the bearing is opposite the release yoke. If it is installed reversely, it will cause damage. Inspect the waving spring for any deformation or bending. If it is bent or deformed, it must be replaced.

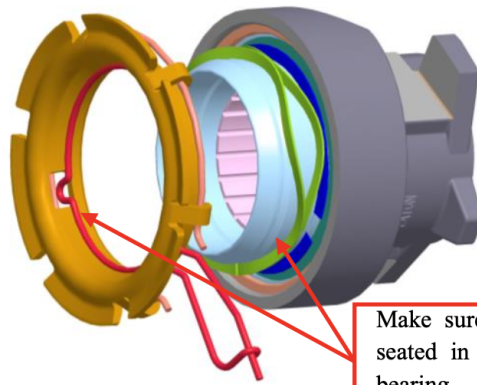
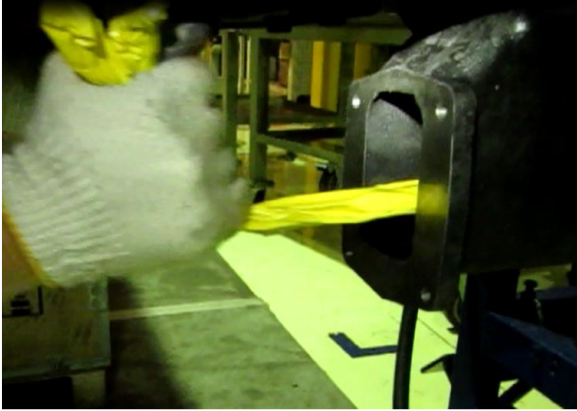


Spring

Align the transmission with the engine in a straight line. Once aligned and coupled, tighten the transmission bolts.



Using a pulling hammer or strong cord, pull the release yoke by hand then release the cord quickly. The bearing will push toward the CA by the yoke, then snap by the quick clip on the CA. To ensure a good connection, repeat this 1 or 2 times.

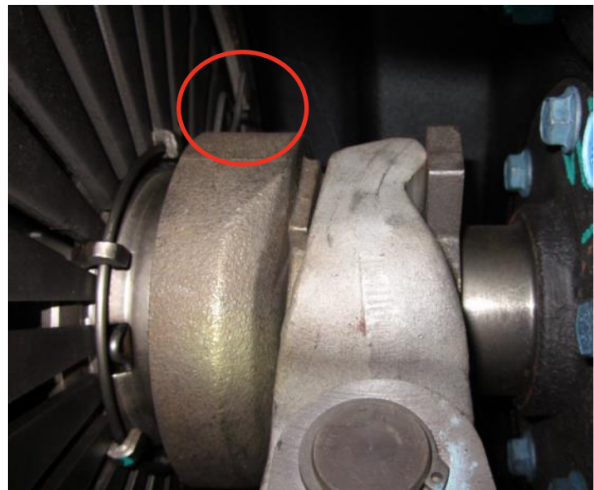


Make sure that ring is fully seated in the groove on the bearing

The installation is not complete

### Clutch Tear Down.

1. Open the clutch inspection window, then reach your hand in and unlock the tail end of the quick clip.



2. Follow step 11 of the installation procedure by pulling the end of the yoke, but only ONCE. The bearing will be pushed away by waving spring. Then separate the transmission from the engine.



3. Tear down the CA and DDA in reverse sequence as the installation. Be sure to loosen the CA bolts in the proper sequence of the crisscross pattern. After that, the DDA will be loose from the CA.

