

Max Torque 280 Nm

BLACK PAINTED

Dimensions w/o tol. are reference

For operating condition outside those stated, please consult Casappa S.p.A. Technical sales department

Signature for approval

Date:

PAGE 1 OF 4

Cap.Forn./Rules Suppl.	Trattamento Termico / Heat Treatment	Trattamento Superficiale / Surface Treatment	Prof.(mm) / Depth
-	-	-	-
Quote senza indicazione di tolleranza / Unless otherwise specified tolerances		Materiale / Material	Durezza / Hardness
GRADO DI PRECISIONE ACCURACY LEVEL		-	-
Disegnato/Drawn	Approvato/Approved	Mod.Tecn./ Release change	Progetto/Project
Date	15-07-2014	15-07-2014	Stato / Process
Firma	MarcottiF	GuidettiM	File
Signature			03570022
Descrizione / Description			Scala/Scale
POMPA KP30.31S0-A8K9-POF/OD-T-PV-HSC (ANF3)(CN) (VNR01)			Formato/Size
PUMP KP30.31S0-A8K9-POF/OD-T-PV-HSC (ANF3)(CN) (VNR01)			1:2 A3
Codice / Code	Sostituisce / It replaces		Ind. Mod./ Index Rev.
03570022	-		0

6

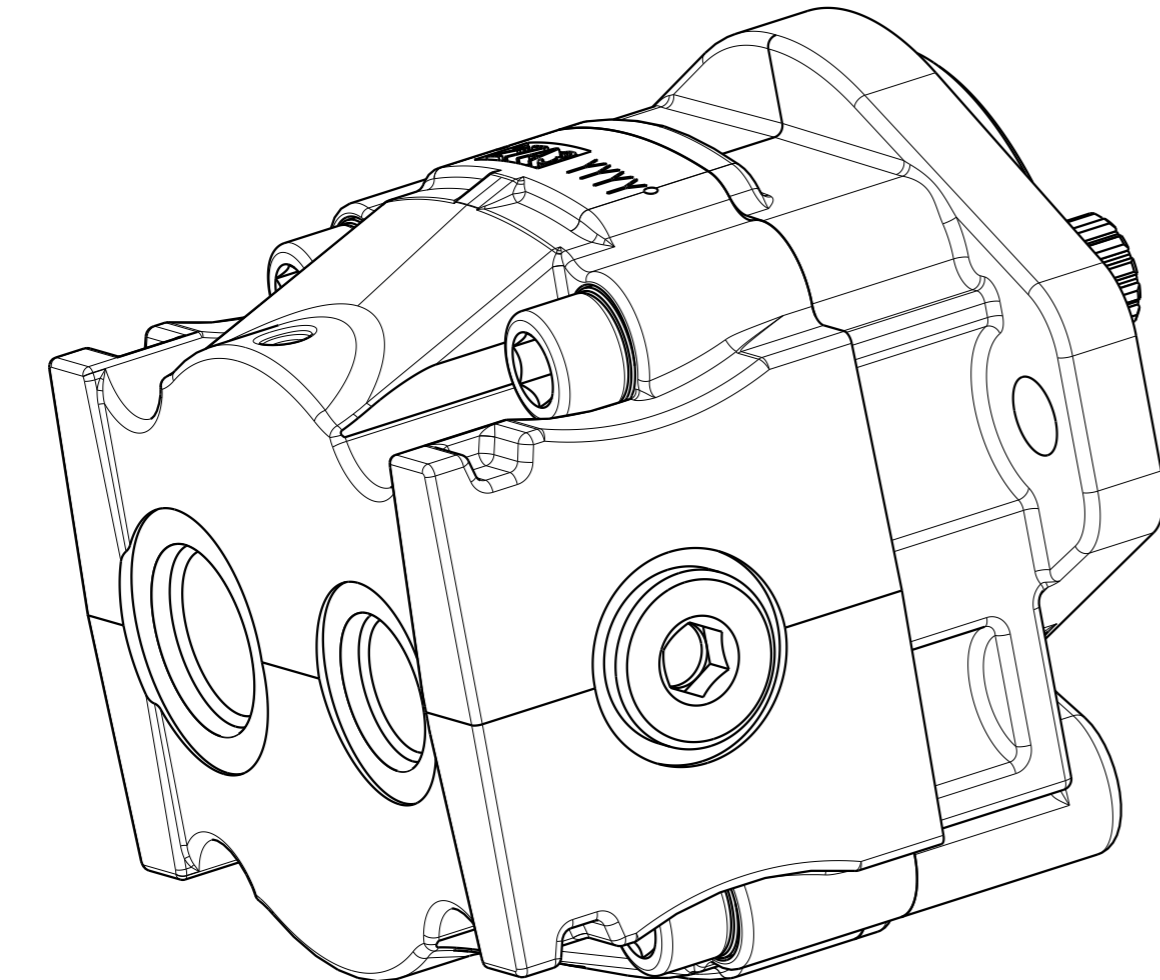
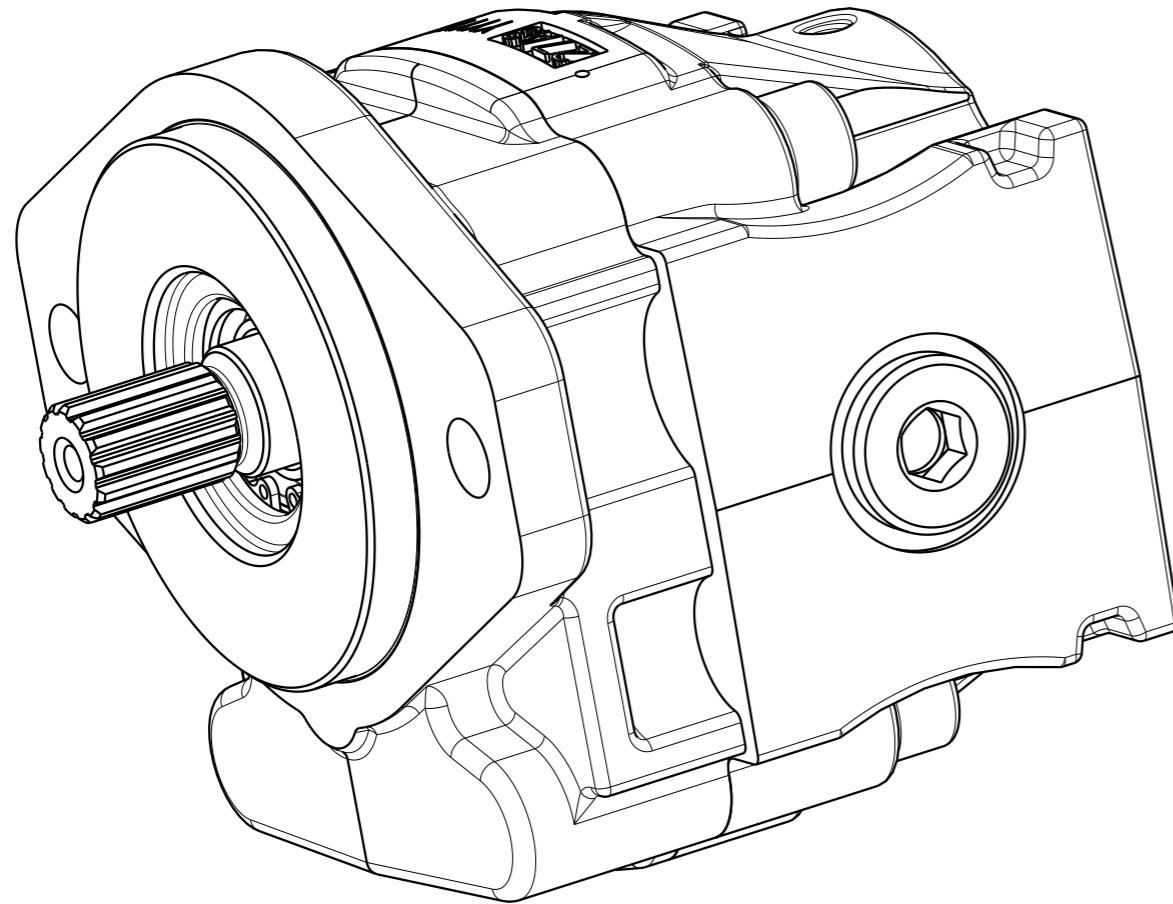
5

4

3

2

1



PUMP DATA

Senso di rotazione (guardando l'albero conduttore) Direction of rotation (looking on drive shaft)		Sinistro (S) Counter Clockwise (S)
Cilindrata - Displacement		30.63 [cm ³ /rev]
Campo pressione di alimentazione per pompe Inlet pressure range for pump		0.7 - 3 [bar abs.]
Pressione max continua - Max continuous pressure	P1	- [bar]
Pressione max intermittente - Max intermittent pressure	P2	250 [bar]
Pressione max picco - Max peak pressure	P3	270 [bar]
Velocità - Speed	min P1	350 [min ⁻¹]
	max P1	3000 [min ⁻¹]
Guarnizioni - Seals type		HNBR - Shaft seals FKM
Temperatura minima - Min temperature		-25 [°C]
Temperatura massima - Max temperature	continuous	+ 110 [°C]
	peak	+ 125 [°C]
Campo di viscosità - Viscosity range	recommended	12 to 100 mm ² /s (cSt)
	permitted	max 750 mm ² /s (cSt)
Classe di contaminazione - Contamination class	$\Delta p > 200$ bar $\beta x = 75 - 10 \mu m$	8 - Nas 1638
		19/17/14 - ISO 4406
	$\Delta p < 200$ bar $\beta x = 75 - 25 \mu m$	10 - Nas 1638
		21/19/16 - ISO 4406
Codice del prototipo - Prototype code		-
Codice cliente - Customer code		-
Valvola di massima pressione - Relief valve		- [bar]
Pressione di stand-by valvola LS - Stand-by pressure LS valve		- [bar]
Peso - Weight		14.646 kg
Vernice - Painting		BLACK RAL9011
Trattamenti speciali - Special treatment		

For operating condition outside those stated, please consult Casappa S.p.A. Technical sales department

Signature for approval

Date: _____

PAGE 2 OF 4

Cap.Forn./Rules Suppl.	Trattamento Termico / Heat Treatment	Trattamento Superficiale / Surface Treatment	Prof.(mm) / Depth
-	-	-	-
Quote senza indicazione di tolleranza / Unless otherwise specified tolerances	GRADO DI PRECISIONE ACCURACY LEVEL		Durezza / Hardness
-	-		-
Disegnato/Drawn	Approvato/Approved	Mod.Tecn./ Release change	Progetto/Project
15-07-2014	15-07-2014	-	-
Firma Signature	MarcottiF	GuidettiM	File
			03570022
Descrizione / Description			Scala/Scale
POMPA KP30.31S0-A8K9-POF/OD-T-PV-HSC (ANF3)(CN) (VNR01)			3:4
PUMP KP30.31S0-A8K9-POF/OD-T-PV-HSC (ANF3)(CN) (VNR01)			Formato/Size
			A3
Codice / Code			Ind. Mod./ Index Rev.
03570022			0
Sostituisce / It replaces			

6

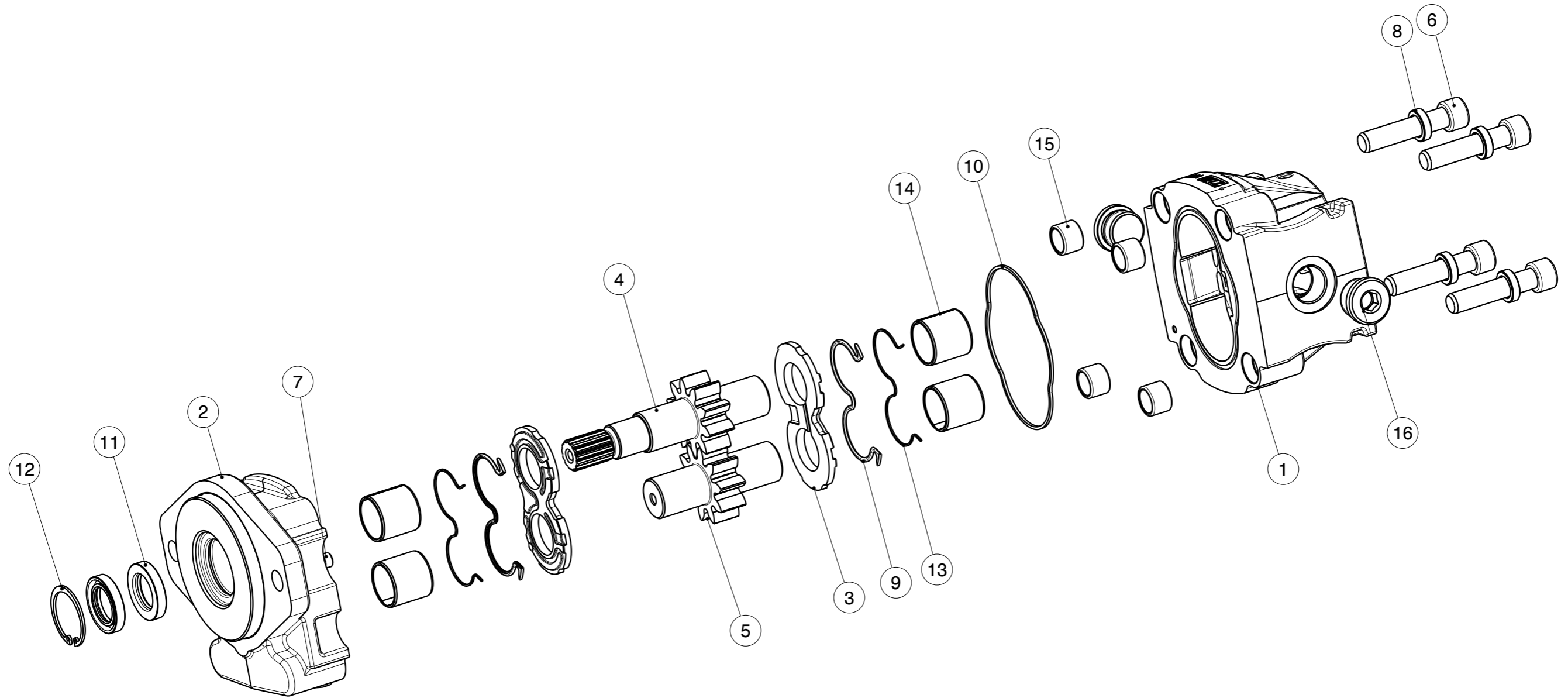
5

4

3

2

1



Cap.Forn./Rules Suppl.	Trattamento Termico / Heat Treatment		Trattamento Superficiale / Surface Treatment		Prof.(mm) / Depth
-	-		-		-
Quote senza indicazione di tolleranza / GRADO DI PRECISIONE ACCURACY LEVEL			Materiali / Material		Durezza / Hardness
Unless otherwise specified tolerances			-		-
Date	Disegnato/Drawn	Approvato/Approved	Mod.Tecn./ Release change	Progetto/Project	Stato / Process
15-07-2014	15-07-2014	-	-	-	Scala/Scale
Firma Signature	MarcottiF	GuidettiM	File	03570022	Formato/Size
					1:3
					A3
Descrizione / Description					Ind. Mod./ Index Rev.
POMPA KP30.31S0-A8K9-POF/OD-T-PV-HSC (ANF3)(CN) (VNR01)					0
PUMP KP30.31S0-A8K9-POF/OD-T-PV-HSC (ANF3)(CN) (VNR01)					
Codice / Code			Sostituisce / It replaces		
03570022			-		

D

D

16	49468042		2	TAPPO ACCIAIO TCEI 3/4 GAS CON OR 25,07X2,62 V STEEL PLUG TCEI G3/4 WITH OR 25,07x2,62 V	0
15	49326000		4	BUSSOLA DI CENTRAGGIO 21x15 STEEL BUSHES 21x15	3
14	42395050		4	BOCCOLA MB 28.30 DU F30-K30-HD30 SLEEVE BEARING MB 28.30 DU F30-K30-HD30	0
13	41387150		2	ANTIESTRUSORE Z FP-KP-HD30 S/D ANTIEXTRUSION RING Z-FP-KP-HD30 S/D	3
12	40810000		1	ANELLO 40 UNI 7437-DIN 472 RING 40 UNI 7437-DIN 472	0
11	39918501		2	PARAOLIO BA 24X40X7 V (F.P.) SHAFT SEAL BA 24X40X7 V (F.P.)	0
10	39666140		1	GUARNIZIONE KP 30 STANDARD SEZIONE QUADRATA (HNBR) STANDARD SEAL KP 30 SQUARE SECTION (HNBR)	0
9	39656138		2	GUARNIZIONE FP-KP-HD30 S/D (HNBR) SEAL FP-KP-HD30 S/D (HNBR)	0
8	37583901		4	ROSETTA 14 (15X22X6) FEZN12-C-1A HV300 DEIDROGENATA (Y) WASHER 14 (15X22X6) FEZN12-C-1A HV300 DEIDROGENATA (Y)	2
7	37185000		1	GRANO 1/8"-27 NPTF LEVL-SEAL GRUB SCREW 1/8"-27 NPTF LEVL-SEAL	2
6	34409021		4	VITE TCEI M 14X65 - ISO4762 - 12.9 PHOSPHATE + DRY OIL SCREW TCEI M 14X65 - ISO4762 - 12.9 PHOSPHATE + DRY OIL	0
5	32747115		1	INGR.CONDOTTO F-K-HD-PL30.31/F (Y) DRIVEN GEAR F-K-HD-PL30.31/F (Y)	1
4	27800723		1	INGR.CONDOTTORE PL30.31-A8-6 (Y) DRIVE SHAFT PL30.31-A8-6 (Y)	3
3	25935007		2	RASAMENTO F-K-HD30/AL S/D (37GRADI) (1) THRUST PLATE F-K-HD30/AL S/D (37 DEGREES) (1)	3
2	23263660		1	COPERCHIO ANT. KP30-K9 (1) FRONT COVER KP30-K9 (1)	3
1	21000039		1	CORPO KP30.31-POF/OD-HSC (ANF3) (Y) BODY KP30.31-POF/OD-HSC (ANF3) (Y)	0

C

C

B


B

Pos.	Codice Code	Kit	Q.tà Q.ty	Descrizione Description	Indice Modifica Index Revision
------	-------------	-----	-----------	-------------------------	--------------------------------

PAGE 4 OF 4

A

A

Cap.Forn./Rules Suppl.		Trattamento Termico / Heat Treatment		Trattamento Superficiale / Surface Treatment		Prof.(mm) / Depth	
-		-		-		-	
Quote senza indicazione di tolleranza / Unless otherwise specified tolerances				Materiale / Material		Durezza / Hardness	
GRADO DI PRECISIONE ACCURACY LEVEL				-		-	
Disegnato/Drawn		Approvato/Approved		Mod.Tecn./ Release change		Scala/Scale	
15-07-2014		15-07-2014		-		1:1	
Firma Signature		GuidettiM		File		Formato/Size	
MarcottiF				03570022		A4	
				Codice Grezzo / Master Code		-	
				-			
Descrizione / Description						Ind. Mod./ Index Rev.	
POMPA KP30.31S0-A8K9-POF/OD-T-PV-HSC (ANF3)(CN) (VNR01)						0	
PUMP KP30.31S0-A8K9-POF/OD-T-PV-HSC (ANF3)(CN) (VNR01)							
Codice / Code				Sostituisce / It replaces		-	
03570022							