

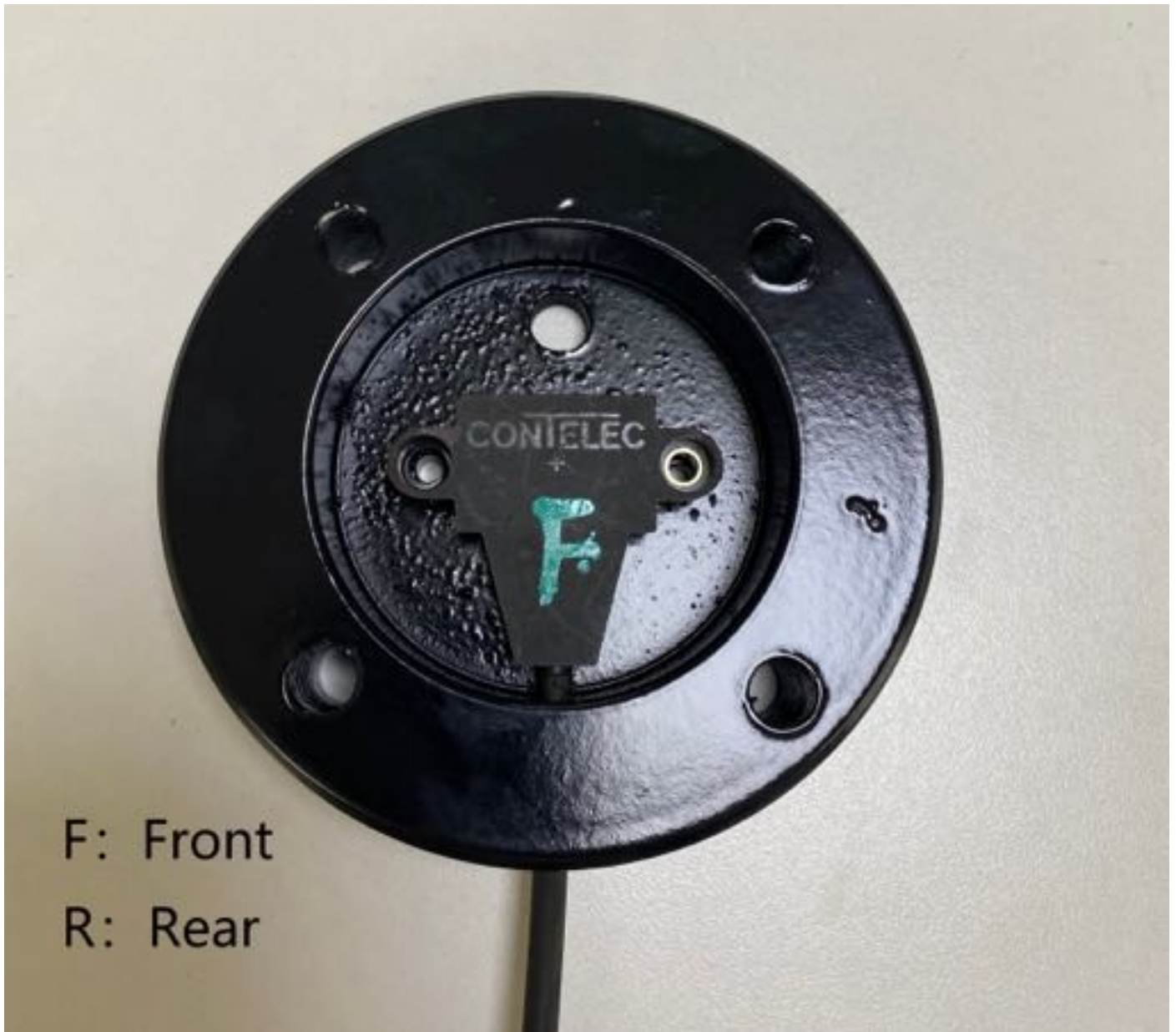
Angle sensor replacement:

1. Remove the angle sensor mounting cover 4 bolts on the axle;

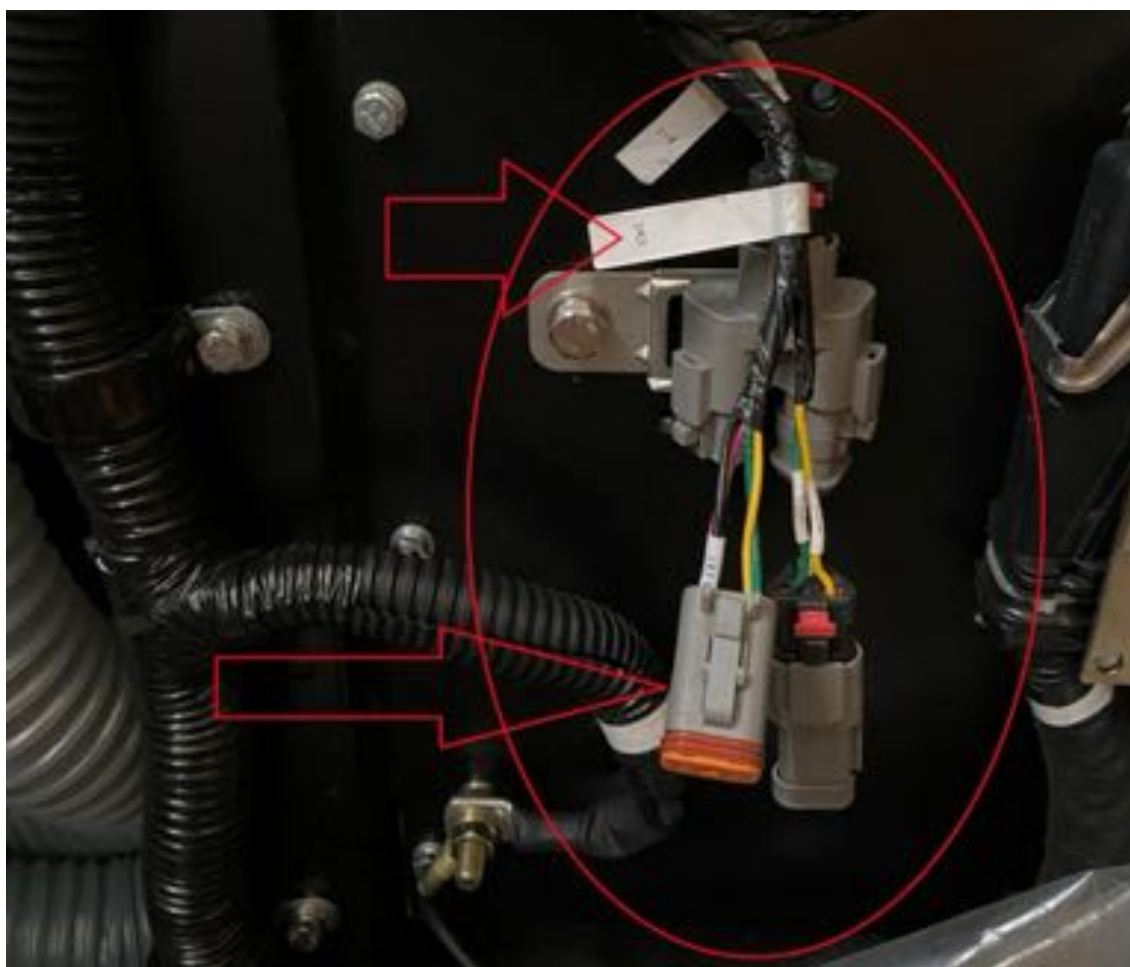


- 2.

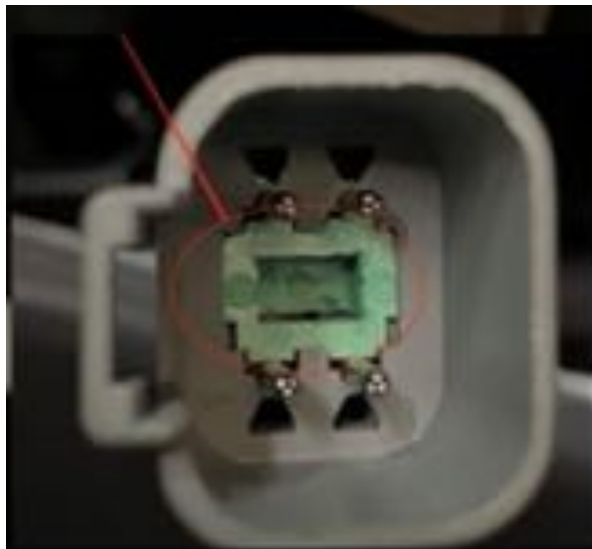
1. Angle sensors need to distinguish between front and rear axles, On the sensor surface there are marked F- for front Axle, R- for Rear Axle ; When the angle sensor is installed, the "+" on the sensor is on the outside (The correct installation method is shown in the following figure);



2. Disconnect the "R" connector (DT04-4P) inside the electrical control box, The angle sensor harness pin exits, Then the angle sensor harness can be pulled out;



3. Exit method for connectors (DT04-4P).:



1



2



3



4

4. tools and materials for angle sensors;

SN-58B





1



2



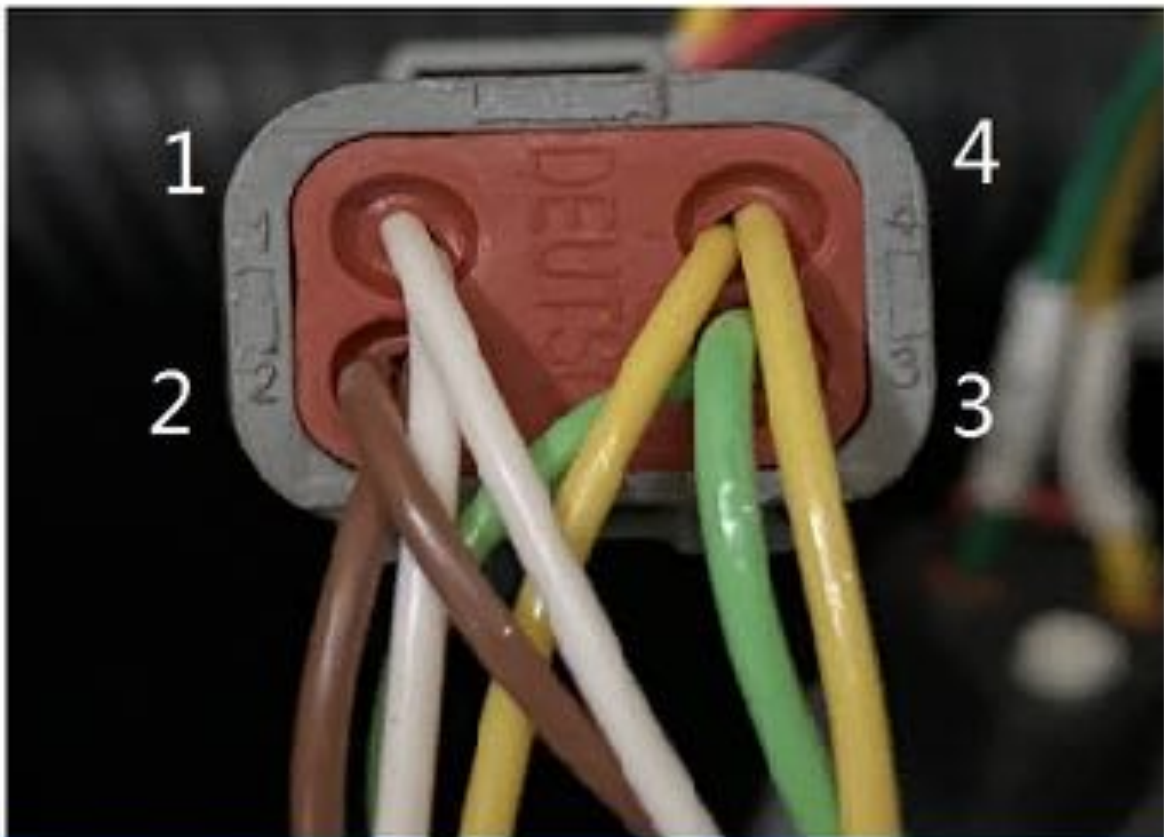
3



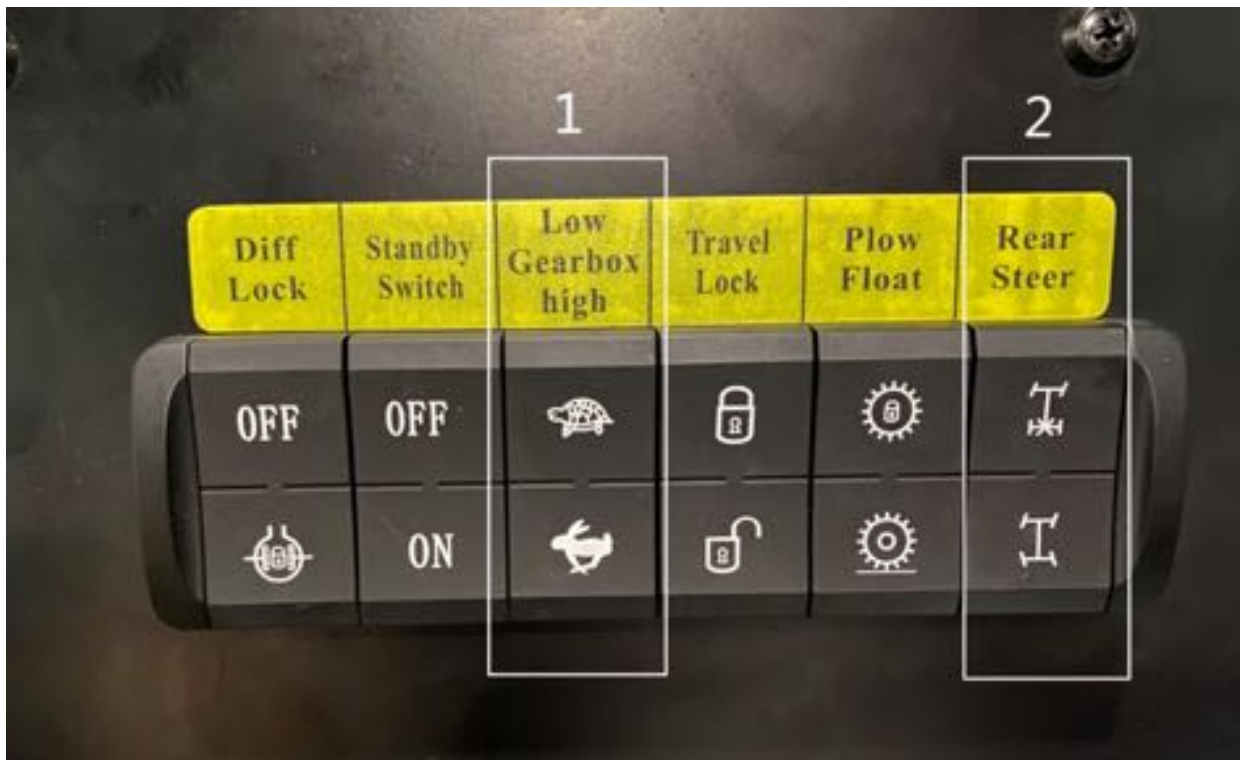
4



R	Steer sensor	DT04-4P
1	Sensor GND	White
2	Sensor PWR	Brown
3	CAN H	Green
4	CAN L	Yellow



5. After installation, start the engine, (1) the transfer box is in the low gear position, and (2) turn on the rear steering switch.



6. Turn the front and rear wheels simultaneously to a forward horizontal straight position.



7. Press F6 to enter the other interfaces of the display and turn off the rear steering function.



8. Press F7 on the home page to enter the system setup interface; A - First calibrate the middle position of the front and rear wheels; B - Then use the joystick to operate the rear wheel left turn limit position, in the display calibrated the rear wheel left turn limit position; C - Use the joystick to operate the rear wheel right turn to the limit position, and calibrate the rear wheel right turn limit position on the display; D-Press F8 to exit.

