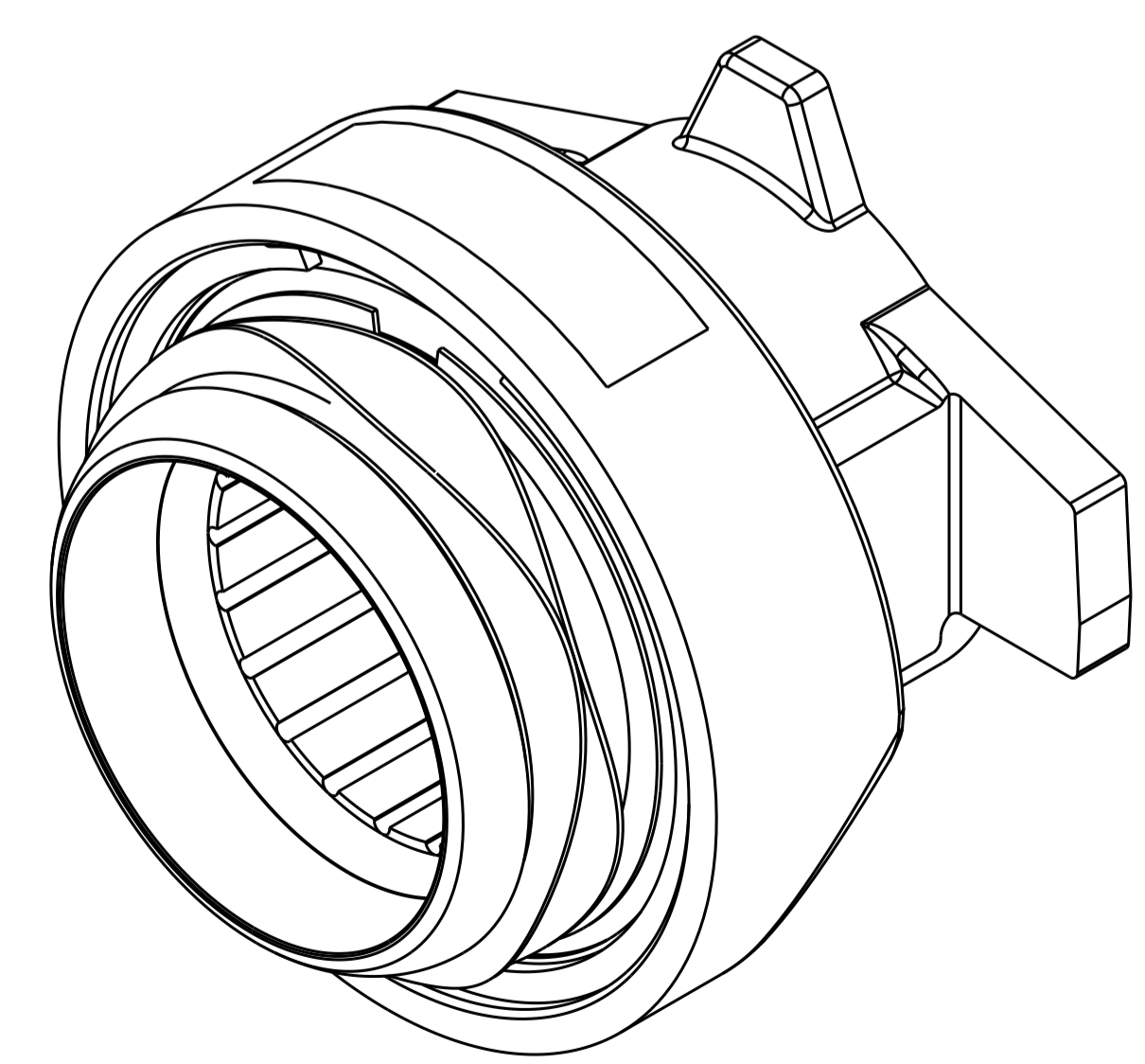
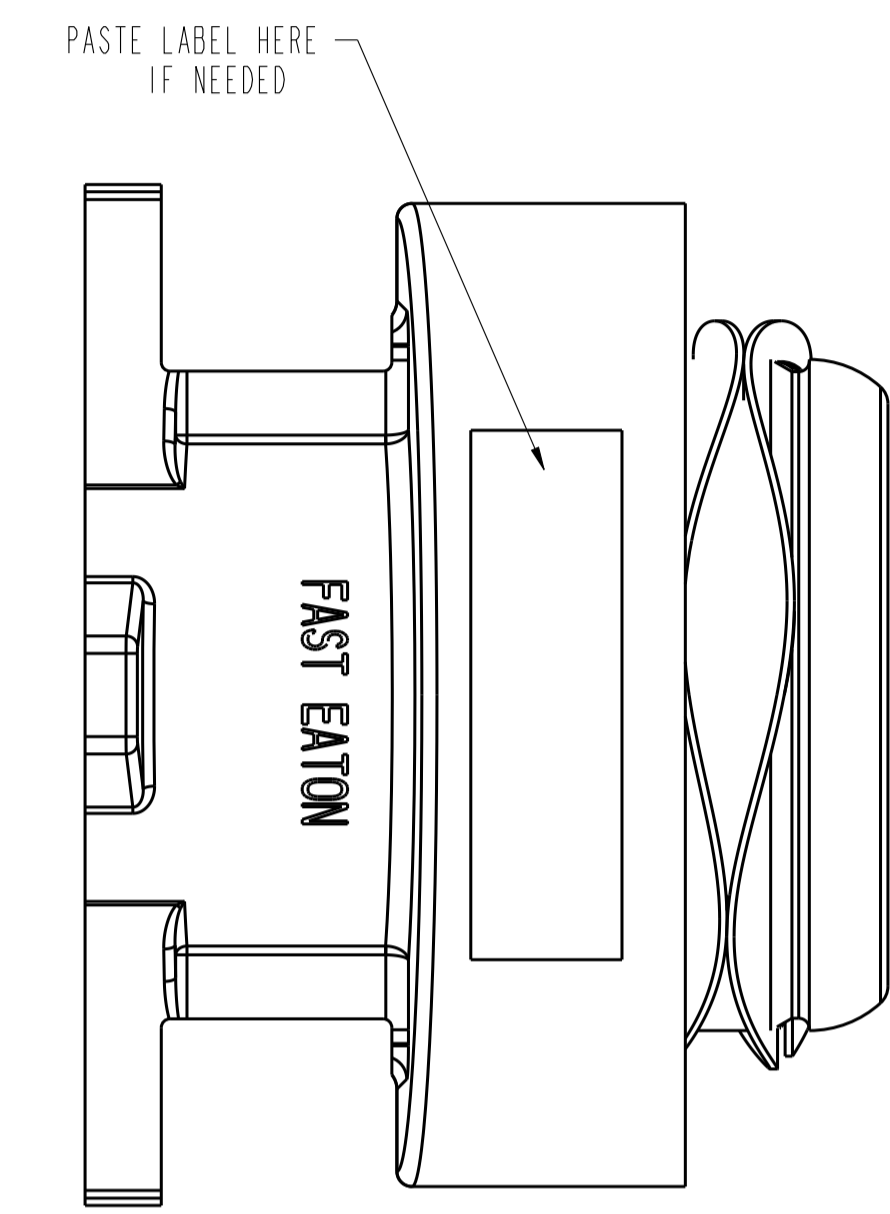
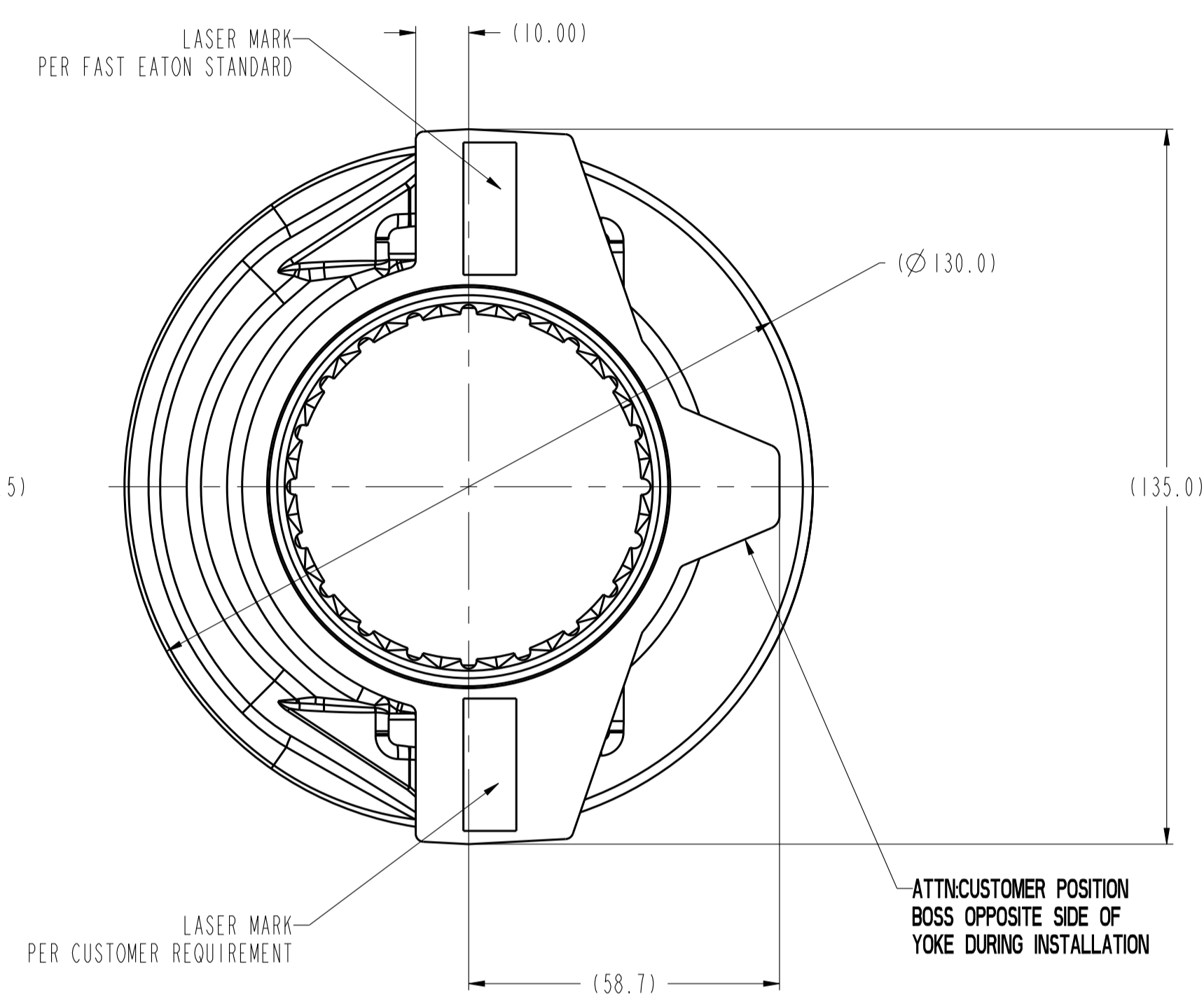
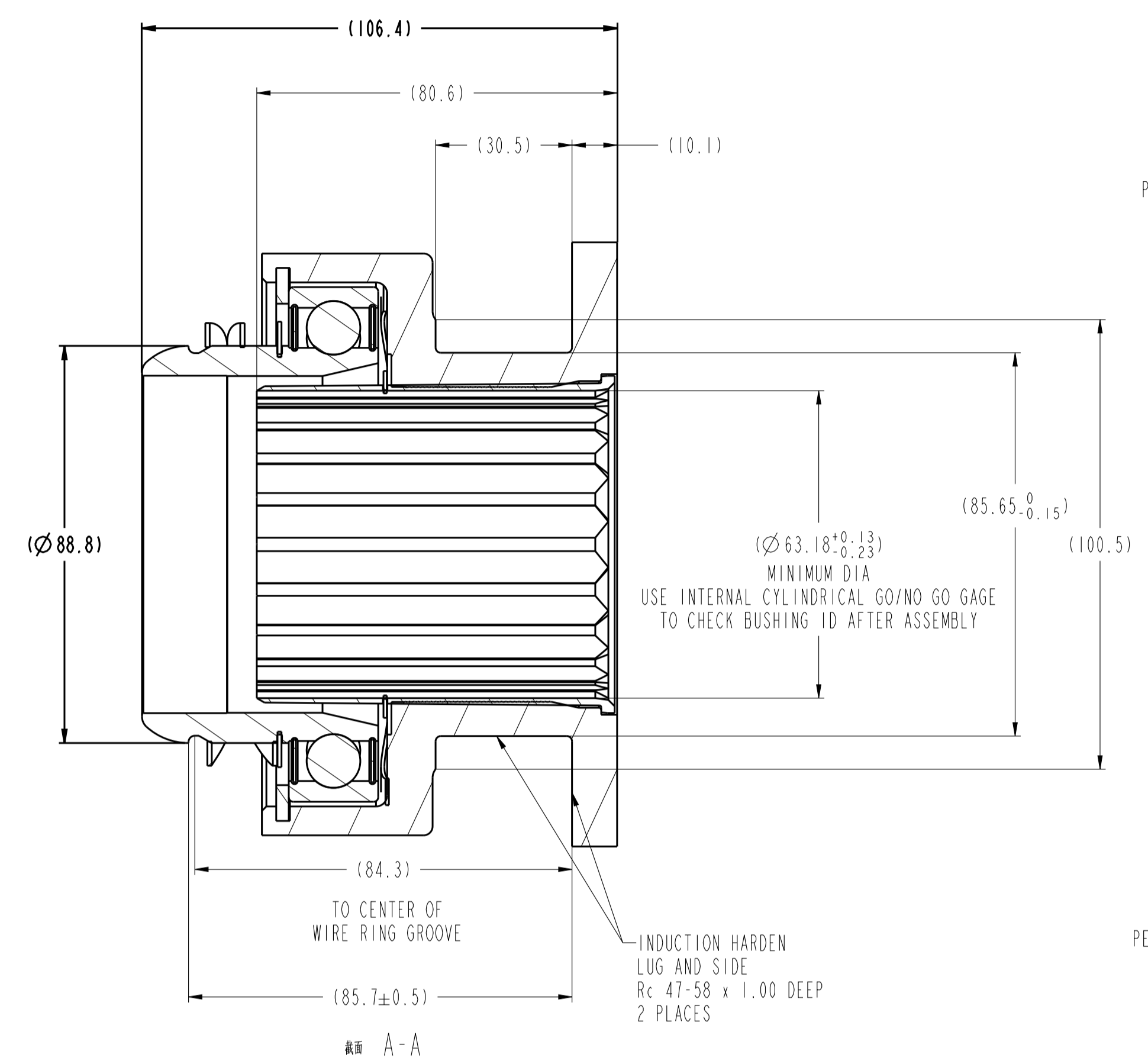


ECO NO.	REV.	ZONE	CHANGED FROM	DR.	CH.	DATE



- NOTES:
1. RECOMMENDED QUILL (Ø 62.560-Ø 62.611)
  2. RADIAL SLIDING TRAVEL IS 1.85-2.5mm
  3. RADIAL ADJUSTING FORCE IS 80-250N
  4. BEARING PRE-LOAD (100-200N) REQUIRED BY LINKAGE

ENGINEERING SPECIFICATIONS		COPIES OF THIS DOCUMENT ARE NOT CONTROLLED	
REL-BRG-ASSY		FAST EATON (XI'AN) DRIVETRAIN COMPANY LTD.	
Release bearing assembly		NOTICE TO PERSONS RECEIVING THIS DRAWING AND/OR TECHNICAL INFORMATION: THIS DOCUMENT, INCLUDING THE DRAWING AND INFORMATION CONTAINED THEREON, IS CONFIDENTIAL AND IS THE EXCLUSIVE PROPERTY OF FAST EATON (XI'AN) DRIVETRAIN COMPANY LTD. AND IS MERELY ON LOAN AND SUBJECT TO RECALL BY FAST EATON AT ANY TIME. BY TAKING POSSESSION OF THIS DOCUMENT, THE RECIPIENT ACKNOWLEDGES AND AGREES THAT THIS DOCUMENT CANNOT BE USED IN ANY MANNER ADVERSE TO THE INTERESTS OF FAST EATON, AND THAT NO PORTION OF THIS DOCUMENT MAY BE COPIED OR OTHERWISE REPRODUCED WITHOUT THE PRIOR WRITTEN CONSENT OF FAST EATON. IN THE CASE OF CONFLICTING CONTRACTUAL PROVISIONS, THIS NOTICE SHALL GOVERN THE STATUS OF THIS DOCUMENT.	
MODEL	430MM	#.D.	1809001
DATE	Aug-10-17	SCALE	1.000
DRAWN BY	ZWL	CHECKED BY	LW
ESTIMATED REFERENCE WEIGHT (KGS)	2.86	THIRD ANGLE PROJECTION	UNLESS OTHERWISE SPECIFIED: DIMENSIONS ARE IN MM DIMENSIONING AND TOLERANCING IN ACCORDANCE WITH ASME Y14.5M-1994
DO NOT SCALE DRAWING		PART NO. <b>FEC125016</b> REVISION <b>A</b>	
TOLERANCES: X X 1.00X1 = 0.01 CASTINGS AND BUSHINGS DRAFT ANGLES MIN 1:20 MAX ANGLES 27° REMOVE ALL BUBBLES		<b>METRIC</b>	
2 OF 2		REF: -	
SIZE A1			