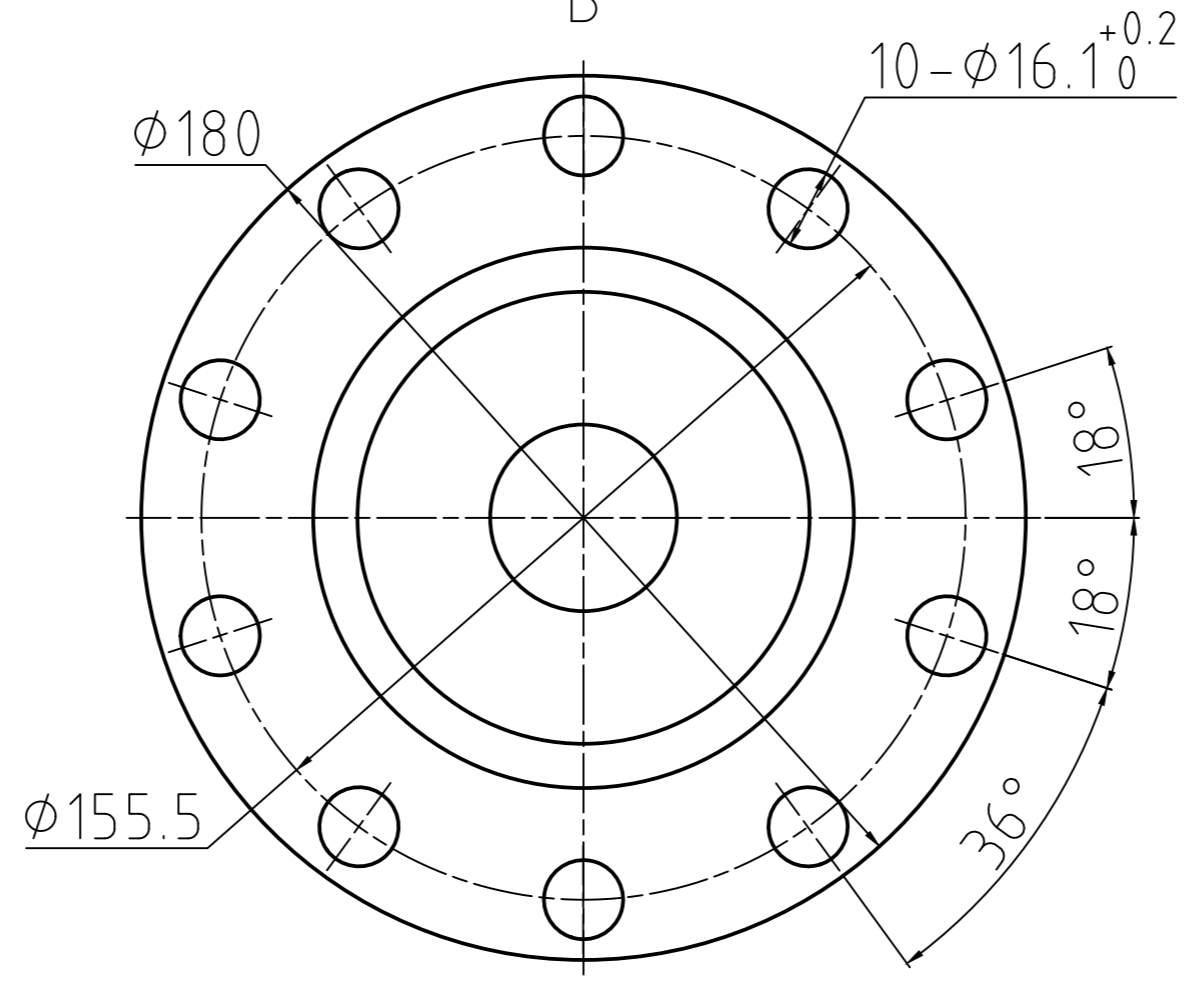
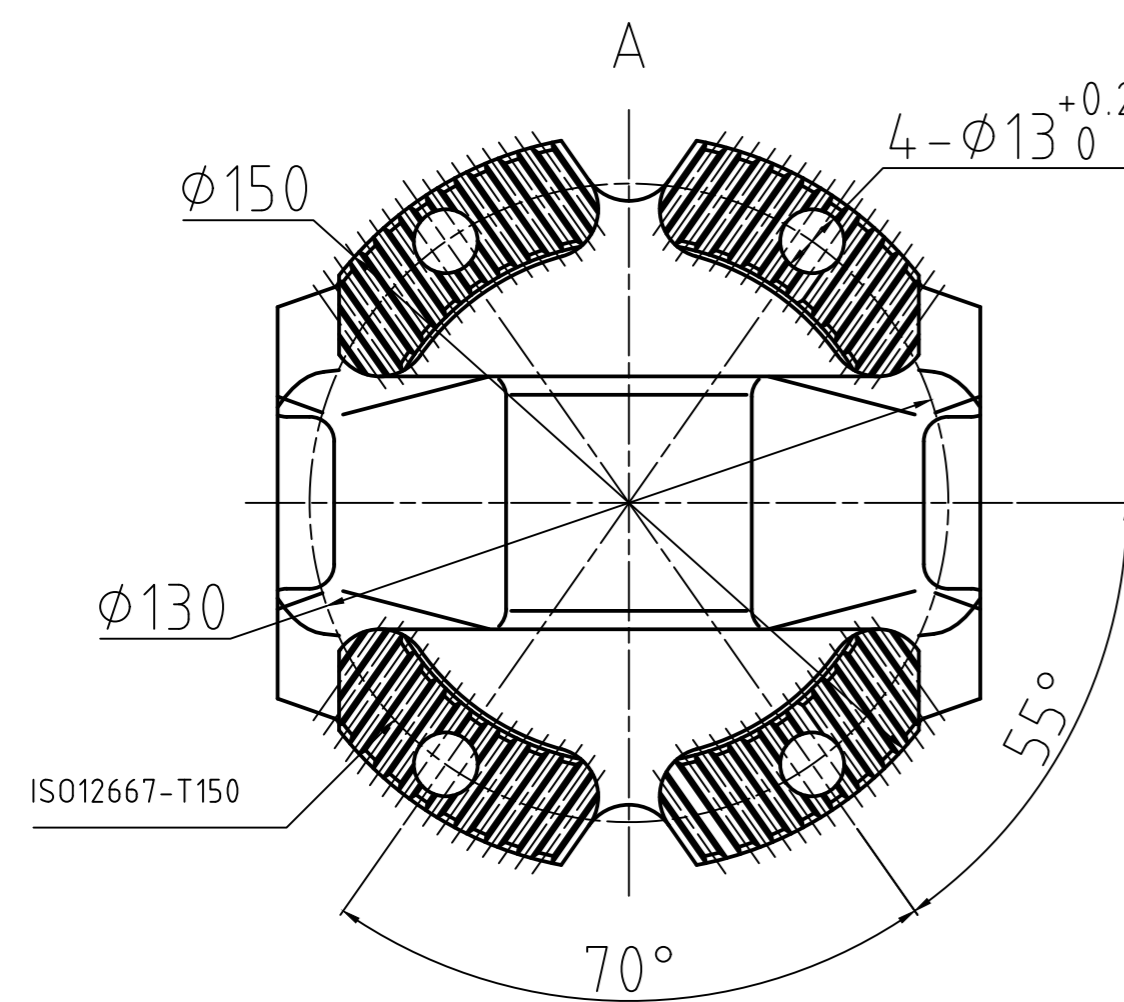


$L_{min}=750^{+2}_{-3}$ -- $L_{max}=810$



- Technical Conditions:
1. Rated Torque: 8000N·m.
 2. After assembly, the cross shaft lines of the connection discs at both ends should be in the same plane, with an allowable deviation of $\pm 2^\circ$. The cross shaft should rotate smoothly without any jamming, and the one-way swing angle should be at least 30° .
 3. During dynamic balancing, balance plates should be welded at the transmission shaft tube and the sleeve tube as needed, with no more than 3 plates per end, and the allowable imbalance at each end should not exceed 50g·cm, with a balancing speed of 2000rpm (no more than two balance plates can be stacked).
 4. When assembling, apply automotive lithium-based grease to the spline.
 5. The oil nozzle must be filled with automotive lithium-based grease before operation.
 6. Mark the positions with arrows as shown in the figure.
 7. Inscribe the part number, production batch, and manufacturer's logo on the shaft tube.
 8. After assembly, spray black paint on the non-engaging surfaces of the transmission shaft, ensuring that the paint film quality meets the requirements of T06 in QC/T484.
 9. All other items should comply with the provisions of 'QC/T29082-1992' Technical Conditions for Automotive Transmission Shaft Assemblies.'
 10. Parts not marked are standard parts according to the 0125 standard.

Num	Code	Part name	Q.	material	mass	weight	remark
11	0125-180-110-90-023	flange yoke	1	45#	4.800	4.800	
10	0125HJC-79-94	The fork	1	45#	3.950	3.950	
9	DG69.5	blanking cap	1	08AL	0.075	0.075	
8	$\phi 92 \times 6.5$	axle tube	1	480QZ			
7	0125HJG-79-190	Sliding sleeve	1	45#	3.500	3.500	
6	0125FCZ-82.5-135	Dust guard	1		0.800	0.800	
5	M6YB	Bowl drain	1		0.003	0.003	
4	0125ZC-82.5-298(93)	Shaft forks	1	40Cr	8.460	8.460	
3	0125WXJ 52x133	cardan joint	2	20CrMnTi	3.300	6.600	
2	0125KH	jump ring	8	65Mn	0.008	0.064	
1	0125DMC-150-4-13-130	Face spline flange fork	1	45#	3.400	3.400	

Drive shaft assembly				0125-L=780-ZC		